

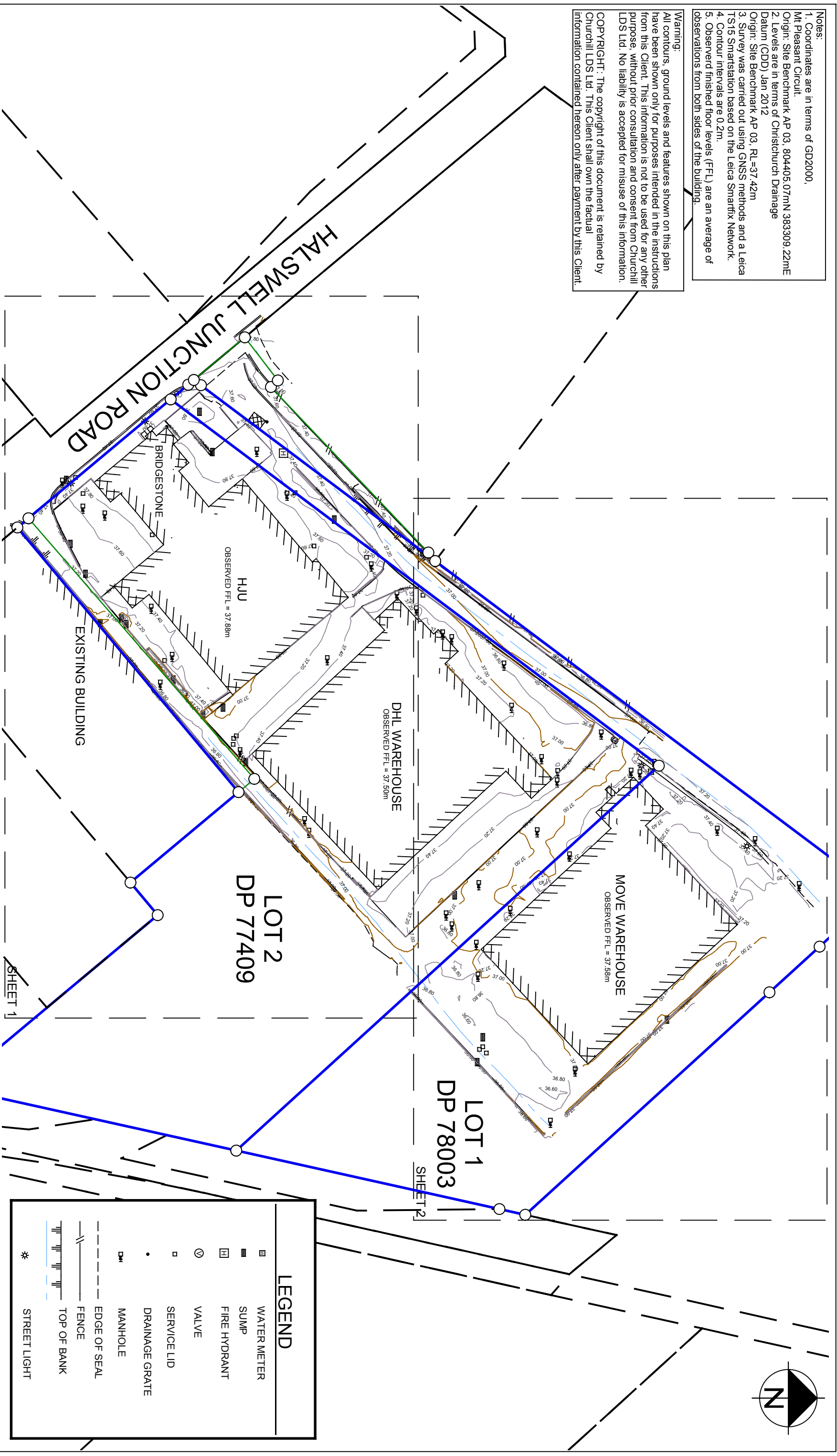
Notes:

1. Coordinates are in terms of GD2000, Mt Pleasant Circuit.
2. Levels are in terms of Christchurch Drainage Datum (CDD) Jan 2012
3. Origin: Site Benchmark AP 03, RL=37.42m
4. Survey was carried out using GNSS methods and a Leica TS15 Smartstation based on the Leica Smartfix Network.
5. Contour intervals are 0.2m.
6. Observer finished floor levels (FFL) are an average of observations from both sides of the building.

Warning:

All contours, ground levels and features shown on this plan have been shown only for purposes intended in the instructions from this Client. This information is not to be used for any other purpose, without prior consultation and consent from Churchill LDS Ltd. No liability is accepted for misuse of this information.

COPYRIGHT: The copyright of this document is retained by Churchill LDS Ltd. This Client shall own the factual information contained hereon only after payment by this Client.



LEGEND	
	WATER METER
	SUMP
	FIRE HYDRANT
	VALVE
	SERVICE LID
	DRAINAGE GRATE
	MANHOLE
	EDGE OF SEAL
	FENCE
	TOP OF BANK
	* STREET LIGHT

CHURCHILL LDS
 SURVEYORS • ENGINEERS • PLANNERS
 P.O. Box 42 028
 Tower Junction
 Christchurch 8149
 Tel: (03) 943 4326
 Cell: (0274) 646 876
 Email: admin@lds.co.nz

TOPOGRAPHICAL SURVEY
GLASSWORKS INDUSTRIAL, SOUTH HORNBY
13585 Glassworks Roadsetout

AMENDMENT SCHEDULE	CLIENT:
	WATTS AND HUGHES
	12d: S:13585 - Watts and Hughes - Glassworks\12d\13585 Glassworks Roadsetout (A3)
	DATE DRAWN: 04/08/14 SCALE: 1:1500
	SURVEYOR: TAM DRAWN: TAM
	DESIGNED: ADC CHECKED: ADC
	13585-20

THESE DRAWINGS REMAIN THE INTELLECTUAL PROPERTY OF CHURCHILL LAND DEVELOPMENT SERVICES LTD. DIMENSIONS TAKE PRECEDENCE OVER SCALING. IF IN DOUBT ASK.